

# The Marine Treasure



## ASCOPHYLLUM

*Ascophyllum nodosum*

*Brown algae* form a very extensive group integrated by around 2000 species, most of which are marine species.

- Water soluble extract.
- Antioxidant, photoprotection, anti-aging.
- Smoothing, emollient, filmogen.
- Sensitive or irritated skin.
- Against hair loss.
- Against hair breakage.



## FUCUS

*Fucus vesiculosus*

The member of the *Brown algae*, *Phaeophyceae*, in which the green color of chlorophyll is masked by brown colored pigments.

- Water soluble extract.
- Anticellulite.
- Moisturizing, filmogenic, epithelizing.
- Soothing, anti-irritant.
- Anti-aging, antioxidant.
- Purifying, antiseptic.



## HIMANTHALIA

*Himantalia elongata*

*Brown alga* distributed around the southern hemisphere, and gathers within the *Fucal* order together with *Ascophyllum*

- Water soluble extract.
- Moisturizing, soothing, emollient.
- Anti-aging, antioxidant.
- Photo protection, hair color protection.



## IRISH MOSH

*Chondrus crispus*

This seaweed is a member of the class *Rhodophyceae* (*Red algae*), and in particular of the *Gigartinaceae* family

- Water soluble extract.
- TEWL regulation, moisturizing, emollient, calming.
- Antioxidant, anti-aging.
- Photo protection, hair color protection.
- Vitamin and mineral source.

# The Marine Treasure

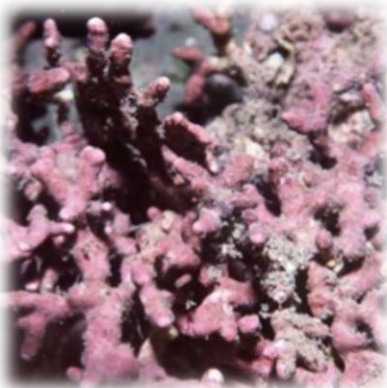


## LAMINARIA

Laminaria sp.

*These plants belong to the family of **Brown algae**. They contain mucilage glands which are covered in groups of sporangia.*

- Water soluble extract.
- Body sculpture.
- Anti-cellulite.
- Antimicrobial, purifying, antiseptic.



## LITHOTHAMNIUM

Lithothamnium calcareum

*The alga appears in free or well ramified, strongly calcified filaments, **blue-violet** in colour and of variable thickness.*

- Water soluble extract.
- Anti-aging.
- Moisturizing, emollient.
- Skin regeneration.
- Soothing.



## MARINE MUDS (IODINE)

Silt

*The muds settled after long periods of time in sediments near thermal springs or at the bottom of the sea*

- Powder.
- Absorbing and purifying power for acne-prone skin.
- Increase collagen and elastin synthesis.
- Wound healing, prevents stretch marks.
- Repair wrinkles and expression lines.
- Skin moisturization and firmness.



## NORI

Porphira sp.

*This **Red alga** is used widely as a foodstuff, and particularly in certain countries of Asia (Japan).*

- Water soluble extract.
- Moisturizing.
- Filmogenic.
- Soothing.
- Emollient.

# The Marine Treasure



## PHYTOPLANKTON

Marine phytoplankton

*Despite of organisms that make up Plankton, a few general characteristics can be recognized that give it a particular aspect.*

- Water soluble extract.
- Repairs oxidized proteins and restores cell communication.
- Promotes barrier repair and repairs skin homeostasis.
- Anti-inflammatory for sensitive and irritated skin.
- Anti-cellulite, remodeling and slimming.
- Paraben free.



## SEA FENNEL

*Crithmum maritimum*

*Sea Fennel belongs to the Umbelliferae family and its habitat consists of rocky coasts and cliff lines.*

- Water soluble extract.
- Firming.
- Antioxidant, anti-aging.
- Wound healing.



## WAKAME

*Undaria pinnatifida*

*A **Brown alga** belonging to the Laminariales order, originally from Japan but now widespread throughout the Mediterranean.*

- Water soluble extract.
- Moisturizing, soothing, conditioning.
- Epithelization, wound healing.
- Tonifying.
- Anti-hair loss.
- Antioxidant, anti-aging.

# The Marine Treasure

No.	Product Name	Porvital code
1	ASCOPHYLLUM	ASCOPHYLLUM EXTRACT H.G. Code: 46130 POLYPLANT MARINE SEAWEEDS GNFN Code: 51900 POLYPLANT OILY SEAWEED Code: 50820 POLYPLANT SEAWEED Code: 50810
2	FUCUS	SEAWEED (FUCUS) OIL Code: 14000, ANTICELLULITE OIL Code: 15000 FUCUS EXTRACT H.G. Code: 42000, SEA MINERALS H.G. Code: 46170, POLYPLANT SEAWEED Code: 50810, POLYPLANT SUNTAN Code: 53600 POLYPLANT H.GL. - M.S. Code: 51770, POLYPLANT OILY SKIN Code: 54300 POLYPLANT Code: 54500, POLYPLANT A/C Code: 52100 POLYPLANT A/C HGL - MS Code: 51880 POLYPLANT A/C HGL - MS Code: 51880 POLYPLANT INTIMATE HYGIENE Code: 53200 POLYPLANT MARINE H.GL. - M.S. Code: 50930 POLYPLANT MARINE SEAWEEDS GNFN Code: 51900 POLYPLANT NORMAL HAIR Code: 50120 POLYPLANT OILY SEAWEED Code: 50820 POLYPLANT OILY SKIN GNBN Code: 51910 COMPLEX 5 - VITAMINIC Code: 50040 FUCUS EXTRACT H.GL. - M.S. Code: 41930
3	HIMANTHALIA	HIMANTHALIA EXTRACT H.G. Code: 46140
4	IRISH MOSH	IRISH MOSH EXTRACT H.G. Code: 42040
5	LAMINARIA	PRONALEN M.S. Code: 75280 LAMINARIA EXTRACT H.G. Code: 42010 LAMINARIA EXTRACT H.GL. - M.S. Code: 43231 POLYPLANT MARINE REVITALIZING Code: 50110 PRONALEN 75300 Code: 75300
6	LITHOTHAMNIUM	LITHOTHAMNIUM EXTRACT H.G. Code: 46160 POLYPLANT MARINE H.GL. - M.S. Code: 50930
7	MARINE MUDS	MARINE MUDS WITH IODINE Code: 81810
8	NORI	NORI COMPLEX Code: 42431 NORI EXTRACT H.G. Code: 46120
9	PHYTOPLANKTON	PHYTOPLANKTON EXTRACT HGL - LC - MS Code: 81390
10	SEA FENNEL	POLYPLANT OILY SEAWEED Code: 50820 POLYPLANT SEAWEED Code: 50810 SEA FENNEL EXTRACT H.G. Code: 46150
11	WAKAME	POLYPLANT MARINE H.GL. - M.S. Code: 50930 POLYPLANT MARINE REVITALIZING Code: 50110 WAKAME EXTRACT H.G. Code: 46110 WAKAME EXTRACT H.GL. - M.S. Code: 42691